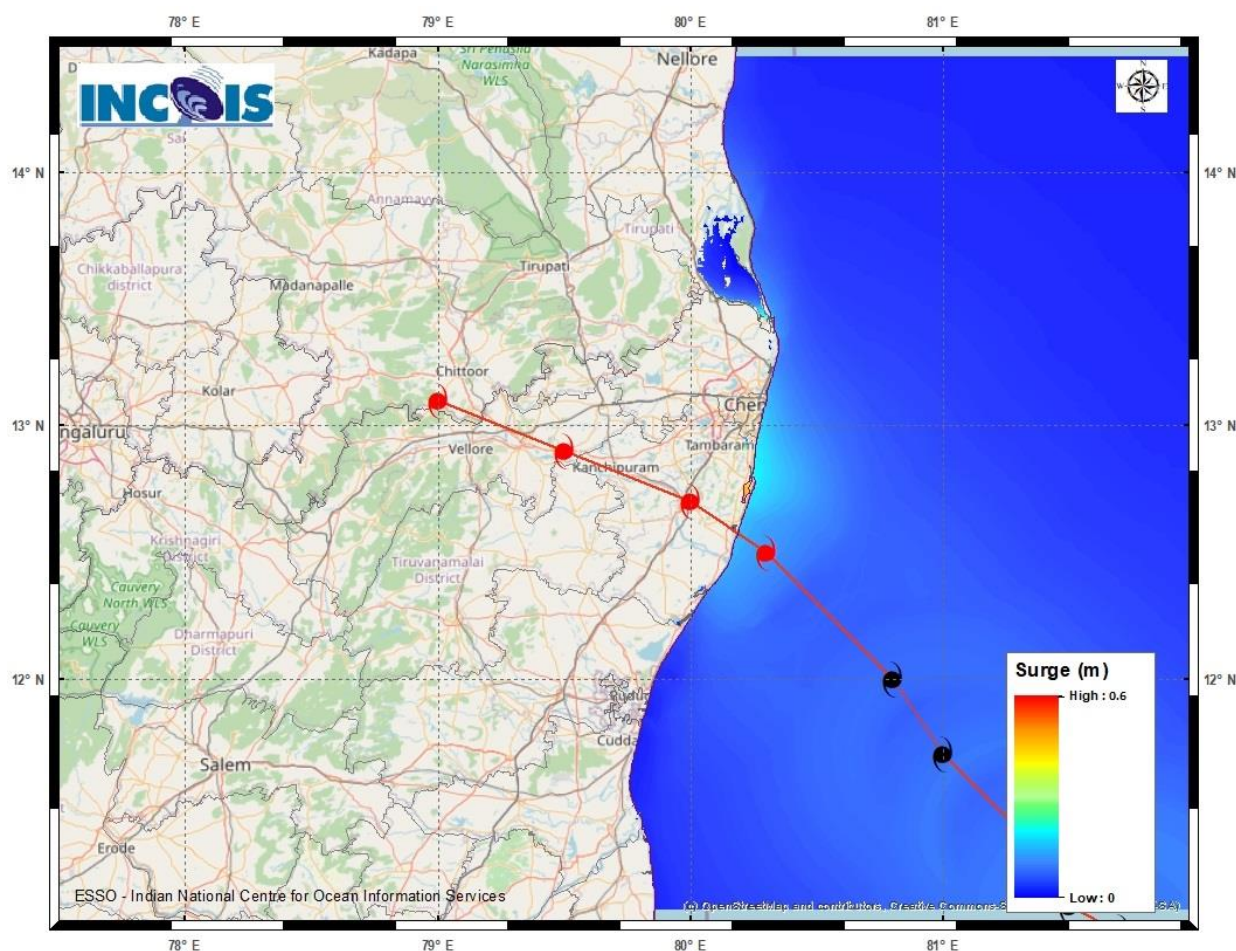


## Event

Cyclone Name	Mandous
Place of Land Fall	North Tamilnadu, Puducherry and adjoining south Andhra Pradesh coasts between Puducherry and Sriharikota around Mamallapuram
Time of Land Fall	During midnight of 09 <sup>th</sup> December to early hours of 10 <sup>th</sup> December
Wind Speed at the time of landfall	65-75 kmph gusting to 85 kmph
Expected Maximum Storm Surge *	0.6 m near Chengalpattu, Kancheepuram District, Tamil Nadu
Expected Maximum Inundation Extent	Around 0.12 Km near Muthukadu, Chengalpattu, Kancheepuram District, Tamil Nadu



### **STORM SURGE HEIGHT INFORMATION:**

\* The below listed surge heights are over and above astronomical tide.

MANDAL/TALUK	DISTRICT	STATE / UNION TERRITORY	NEAREST PLACE OF HABITATION	STORM SURGE (m) *	EXPECTED INUNDATION EXTENT (km)
Chengalpattu	Kancheepuram	Tamil Nadu	Muthukadu	0.3-0.6	Upto 0.12